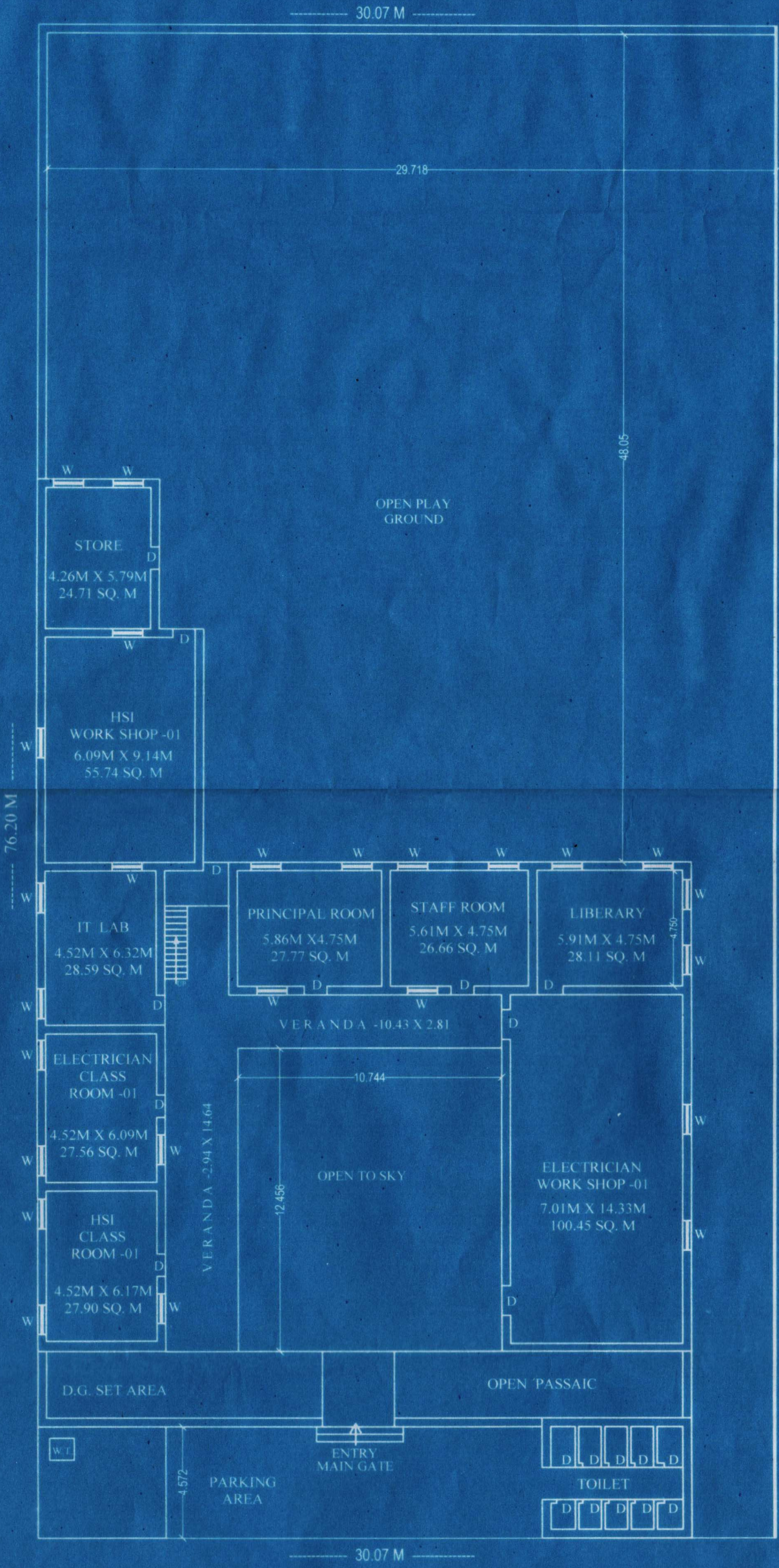


"GAYTRI (PVT) INDUSTRIAL TRAINING INSTITUTE"

AT NEAR MODAL SCHOOL, POKHRAN, TEHSIL- POKHRAN, DISTT. JAISALMER, (RAJ.)-345021

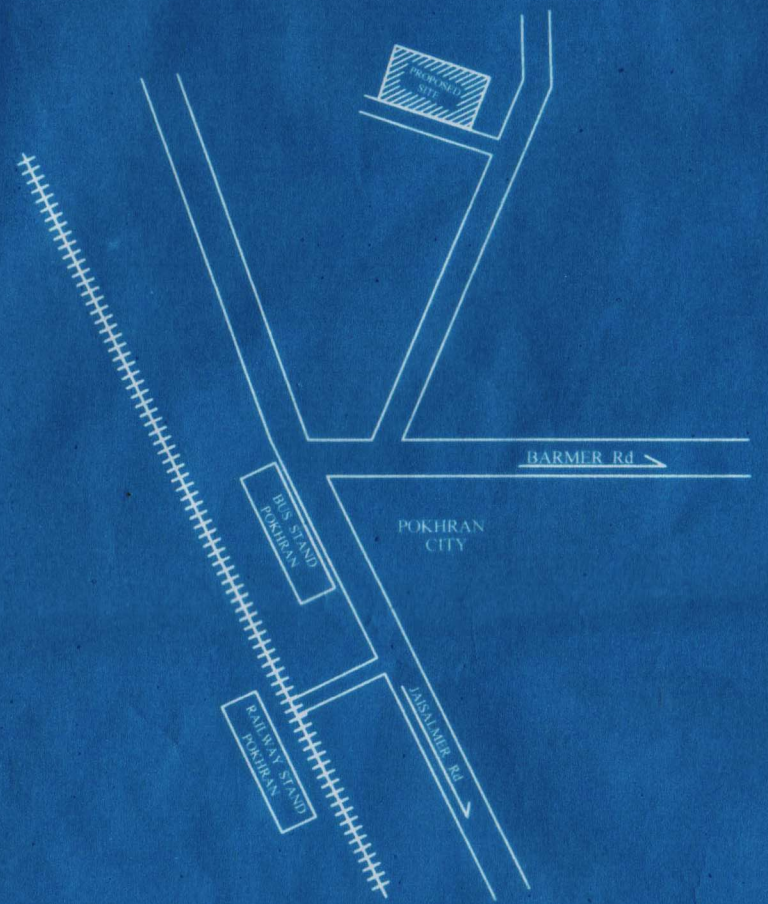


GROUND PLAN FOR

AREA ANALYSIS IN SQ.M

NO	FLOOR	CARPET AREA SQ.MR
1	ELECTRICIAN WORK SHOP-1	100.45 SqM.
2	HSI WORK SHOP -1	55.74 SqM.
3	PRINCIPAL/OFFICE ROOM	27.77 SqM.
4	STAFF ROOM	26.66 SqM.
5	STORE	24.71 SqM.
6	LIBERARY	28.11 SqM.
7	TOILET	22.70 SqM.
8	HSI CLASS ROOM-01	27.90 SqM.
9	ELECTRICIAN CLASS ROOM-01	27.56 SqM.
10	I.T LAB	28.59 SqM.
11	PARKING	70.02 SqM.
12	VERANDAH	66.64 SqM.
13	STEER	13.22 SqM.
14	WATER TANK	23.92 SqM.

TOTAL CARPET AREA - 543.99 Sq.Mtr.
 TOTAL BUILT AREA - 658.03 Sq.Mtr.
 OPEN AERA - 1633.58 SqMtr.
 TOTAL LAND - 2291.61 Sq.Mtr.



LOCATION PLAN FOR

DISTENSE	
ITI COLLEGE TO POKHRAN CITY	= 2 KM
ITI COLLEGE TO BUS STAND	= 2.5 KM
ITI COLLEGE TO RAILWAY STATION	= 3 KM

SEAL & SIG. HEAD OF INSTT.

Rajesh Chandak
Ar. Rajesh Chandak
 COA-CA/2012/56882
 ARCHITECT SIG.